

GOVT. DEGREE COLLEGE JAISINGHNAGAR Distt-Shahdol(M.P.) – 484771

Annual Report 2018-19

This format outlines the annual reports to be published by all colleges in the Madhya Pradesh on their websites, by October 31st of each year. Part I is intended as a guide and colleges are free to alter the contents and format as they see fit. Part II, the Appendix (Institutional Performance Data and Financial Reports), is mandatory and colleges are required to report all data as per the attached format and instructions.

Important Information –

- Name of the college – Govt Degree College Jaisinghangar Distt – Shahdol (M.P.)
- Place of the college – Jaisinghnagar
- District - Shahdol
- Division - Shahdol
- Year of establishment of college - 1984
- Name and Contact details(Mail id , Phone) of Principal – [Dharmendra.Dwivedi04@gmail](mailto:Dharmendra.Dwivedi04@gmail.com) Mob - 9425344422
- Name , Post and Contact details of (mail id, Phone no.) of Reporting In charge – Dr. Dharmendra Kumar Dwivedi(Professor of Chemistry) mob - 9425344422
- Date of report submission -

Part I

1. **The Principal's Report (2 pages)-** Highlights the key activities, events, and successes of the past year and briefly describes major new initiatives to be undertaken over the next year.

The admission is through online process which is absolutely transparent and in accordance with the reservation cum merit norms of the state government. Slow learners are facilitated with remedial classes while advance learners are given special assignments and encouraged to perform better. The college practices an academic calendar for the smooth and timely functioning of all the academic activities.

The primary goal of the institution is to train young student to become a part of the sustainable development including socio-economic development by achieving gender equality through women empowerment and their full enlightenment.

Fresh students are made comfortable through zero classes organized by the college in which teachers from different faculties teach and guide students to develop their inter disciplinary skills.

In the semester system there is provision of CCE, Projects works and emphasis on employment guidance and skills development, career training computer literacy and value based education as an integral part of the curriculum at and levels.

As per existing mechanism of upgrading curriculum, the college receives feedback from the students and the stakeholders, which is incorporated in the curriculum to upgrade the teaching-learning process. The whole act of curriculum up gradation is duly mentioned and analysed by IQAC..

Regular special meetings are arranged with parents, public representatives, and students to obtain feedback for the enrichment and supplementation of teaching learning process to realize the curriculum. For monitoring and evaluating the quality of enrichment programs, the college has IQAC cell which regularly works towards achieving excellence in teaching learning process.

The institution has highly qualified and competent faculty members. They are recruited as per the UGC/ MP government rules. The teachers attend orientation and refresher courses regularly which leads to their knowledge up gradation and skill enrichment. The teachers participate in national and international Conferences, Seminars, Workshops and training programs organized by the Administrative and Management Academy of M.P. and other universities, colleges and the institutions of the country. The Financial support is available to the students in the form of state government scholarships and schemes for SC, ST and OBC, students. Various kinds of financial assistance is provided to the needy and deserving students in the form of fee and railway concession. Majority of students avail financial aid from the Government scholarship schemes. Gold medals and certificates are given to the meritorious students. The College has always been working for the poor students by giving them special consideration during admissions and by providing scholarship and financial assistance and the Book Bank facility.

The IQAC and Swami Vivekanand Career Counselling & have successfully organized a number of workshops and Career Fairs for the welfare of the students. The IQAC provides personal counselling to the students. The college has also strengthened counselling and placement services with the establishment of "Swami Vivekanand Career Counselling cell since 2006.

The different academic bodies meet regularly to find out the strategy for enhancement of teaching and learning. College has definite plans to utilize its available

human resource and to fill the gap where such resource is needed and is not available. The vacant posts are fulfilled by guest faculty.

Every teacher of the college maintains her/his teaching diary. The diary is examined by the Head of The Departments and Principal respectively. Performance of teacher is estimated on the basis of student attendance. In every semester, results of the students are analysed and teacher's performance is decided on the basis of result also.

The college has well maintained library with nearly 20,500 books (both text and reference books). The institution has Career and Counselling Cell, well mechanized grievance cell. The college provides a variety of scholarships for students support and progression. Sports department also plays a key role in student's progression.

The college has two bore wells for water supply to fulfil the need of drinking water as well as to maintain the botanical garden. There is sufficient number of drinking water (RO) facilities provided to the students and faculty members both in every block like Science, Arts and Library. Continuous water supply is maintained in the toilets and washrooms. The college has installed 05 KVA Generator for uninterrupted power supply. The college has a well maintained Botanical Garden flourished with a large number of medicinal plants. The garden presents a curious example of Biodiversity.

Students in this college have participated at various inter university and state level sports events during last five years. The college is always trying to maintain the campus clean, green, and minimize the use of non-degradable hazardous products.

The college has well managed functioning system for student support and progression. There exists different committees and cells to operate student support and progression. The College provides a variety of scholarships for student support and progression, for Post Metric Scholarship, Gaon ki Beti (For Women only), Pratibha Kiran Yojana (For Women only), Vikramaditya, Dr. Shyama Prasad Mukharjee Scholarship, Scholarship for Minority Students, Scholarship for persons with disability, Inspire Scholarship, National merit scholarship.

The college has planned and designed its various programmes and course to achieve the purpose. The mission statement of college obviously defines the distinctive characteristic, as it has an objective to develop an eclectic, multi-skilled education for students.

2. Overview (1 page)

(i) Vision, Mission and Objectives of the college

Vision

To be an institute of academic excellence with a commitment for quality education with ethics and values.

Mission

Empowering students with contemporary knowledge to make them worthy citizens. Providing holistic and value based education with soft skills training to enhance their employability.

Objective

In order to fulfill its stated vision, mission and motto the Govt. Degree College Jaisinghnagar is Committed to

- Academic excellence: Our primary objective is to enable every student to cope up with the latest developments in contemporary, national and global level through effective transaction of the curricular and co-curricular aspects.
- The College is focused on the all round development of the students' personality through proper education and exposure to the vast treasure of knowledge; sports facilities and by providing platforms for their socialization.
- Socially responsible Citizen: College inculcates a sense of civic responsibility, social commitment, and moral accountability among the students through social activities to with exposure to human rights, value system, culture, heritage, scientific temper and environment

Govt. Degree College Jaisinghnagar, Distt.-Shahdol (M.P.), established in 1984. It is affiliated to the Awdhesh Pratap Singh University, Rewa M.P., Recognized by the University grants commission under 2(f) and 12(b) of UGC Act 1956. Today the college offers two undergraduate courses and two PG courses to enable young scholars with an eclectic, holistic and quality education and value based knowledge amongst the tribal student of this area. Curriculum is prepared and designed by the Central Board of Studies, Bhopal (M.P.). The college offers regular degree courses in B.A. & B.Sc. PG courses MSc in Chemistry M.A in political science. College is situated at Gopalpur Road Jaisinghangar Distt- Shahdol Pin 484771 (M.P.) .

(iii) History of the college with significant milestones

The college is spread over seventeen acres with sufficient class rooms, laboratories, library and infrastructural facilities including play ground for various outdoor sports like- Cricket Volley Ball, Basket. Ball, Kho-Kho, and indoor games like Badminton, Table Tennis and Chess. It has multipurpose field for athletics the college is full of greenery with a large number of green plants, trees. The college has 50 seated Girls hostel which is under Construction are well maintained with sufficient bathrooms, toilets, RO drinking water. The college organizes cultural activities providing the platform through Yuva-Utsav by which the students expose their various talents in Singing, Dancing, Acting, Speaking, Group Discussion, Mehendi, clay modelling etc.

The entire infrastructure is well maintained under the supervision of Principal of the College with the assistance of the maintenance committee.

(iv) Faculties and major disciplines

The college provides comprehensive information to the students about its goal, objectives, admission rules, and courses offered, fee structure, scholarship and the available facilities through its prospectus, calendar and website. The average success rate of students during the last four years has been more than 90%.

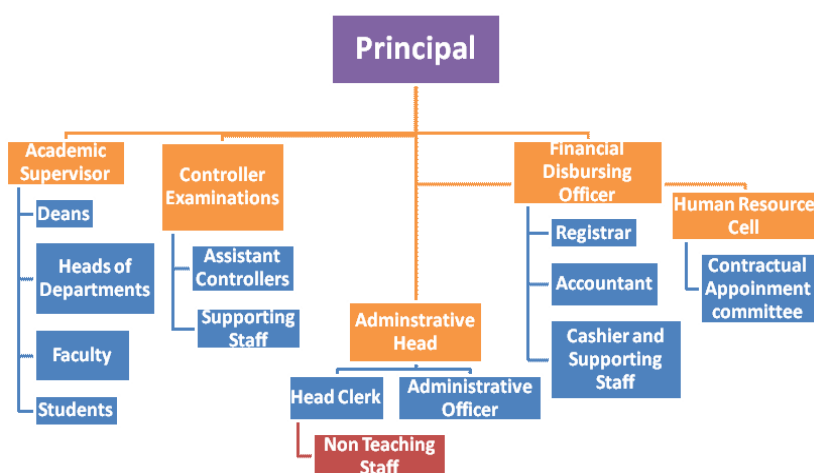
Teachers are also introduced to modern technology. The regular feedback from the students helps faculty members to enhance their professional competency. Out of fourteen faculty member's ten members are Ph.D. degree holders and six are M. Phil. degree holders.

3. Senior Management Team and Board of Governors (1 page)

Lists the members of the senior management team (Principal, Registrar, and Deans Etc.) and members of the Board of Governors including their designations and professional backgrounds.

Administrative Hierarchy

For example -:



List of Chairperson/members of Statutory Bodies like Board of Governors/ Executive Committee/ Academic Council/ Janbhagidari Samiti, etc

4. Admission Statistics (1 page)

- The number of applicants at the UG and PG level who ranked the college as their 1st, 2nd and 3rd preference, the number of applications received for PhD courses, and the number of students admitted at each level as per the following format.

Applications	UG	PhD
Applications that ranked the college as the 1 st preference	766	NA
Applications that ranked the college as the 2 nd preference	490	
Applications that ranked the college as the 3 rd preference	447	
Total number of applications received	1703	
Number of students admitted	1595	

Data Source: E-pravesh portal, records of the affiliating university

- A brief demographic profile of students admitted (in terms of gender, caste, whether from MP etc.)

Name of the Course	Gender	Category	% of students from the State	% of students from other states
B.A	360 MALE 510 FEMALE	ST – 45% SC – 14% OBC – 25% GEN – 16%		
BSc	231 MALE 371 FEMALE	ST – 33% SC – 14% OBC – 21% GEN – 32%		
M.A	33 MALE 37 FEMALE	ST – 38% SC – 14% OBC – 20% GEN – 28%		
M.Sc	22 MALE 31 FEMALE	ST – 15% SC – 17% OBC – 26% GEN – 42%		

5. Academic Programs: Core Programs - UG & PG

Core programs at UG level

Stream	Name of the Core Program	Eligibility	Optional subjects
Arts	Bachelor of Arts	10+2 from a recognized Board OR 10+2 with relevant vocational course from M.P. Board	Foundation course + a group of 3 optional subjects
BA	B.A I, YEAR B.A II, YEAR V sem	10+2 II Sem IV Sem	HINDI LIT , English lit , political Science , Economics, Sociology , History
BSc	BSc I Year Biology BSc II Year Biology V sem BScI math BSc II Year V Sem	10+2 II Sem IV Sem 10+2 II Sem IV Sem	Zoology , Botany, Chemistry Chemistry , physics , math

Core Options at PG level

Faculty	Name of the Core Program	Eligibility	Subject Options
Arts	M.A. Political Science	3 Year's degree course in any Subject	70
Science	M.Sc. Chemistry	3 Year's degree course in Science Subject	53

M.Phil/ Ph.D. Programs

S.no.	Subject	Eligibility	No. of scholars registered
Nil	Nil	Nil	Nil

PG Diploma/ Diploma/ Certificate/ Self-financed/ Skill based Vocational/ Short term courses

Name of the Course	Department	Duration	Fees	Seats
Nil	Nil	Nil	Nil	Nil

6. Academic Calendar 2017-2018

Academic Work	First/ Third/ Fifth Semester	Second/ Fourth/ Sixth Semester
Orientation Classes/Zero Classes/SWOT analysis	According to instruction MPHE	According to instruction MPHE
Teaching and Continuous Comprehensive Evaluation	According to instruction MPHE	According to instruction MPHE
CCE Schedule	According to instruction MPHE	According to instruction MPHE
Preparation Leave	According to instruction MPHE	According to instruction MPHE
Practical Exams (Graduation/Post Graduation)	According to instruction MPHE	According to instruction MPHE
Semester and ATKT Exams	According to instruction MPHE	According to instruction MPHE
Declaration of Examination Results	According to instruction MPHE	According to instruction MPHE
Semester Break (for students)	According to instruction MPHE	According to instruction MPHE
Semester Break (for teachers)	According to instruction MPHE	According to instruction MPHE

7. The Student Experience (4 pages)

Briefly describes student life in the college:

- Infrastructural facilities available to students - Classrooms, Smart classrooms, laboratories and equipment, Common Research Lab, Hostel; Canteen; Garden; Students common room, Auditorium, Sports Complex & other facilities

College Infrastructural facilities available to students – 15 Classrooms, , 04 laboratories and equipments are available . Girls Hostel; are available. ; Girls common room & play Ground for Cricket, Kho-kho, kabaddi , volley ball , football, badminton, is available and other facilities.

- Library as a learning resource- advisory committee, its composition, facilities & services (e & print), annual improvement initiatives

College library With 20,000 Books and Text Books and one Reading Room is also available . E- library and Wi-fi is Required .

- Student support services:
 - ✓ IT enabled services

One Computer Class Room for IT services to Students in Which eight Computer and Two printers are available.

- ✓ Financial assistance (scholarships/ schemes for SC/ST/OBC/ minority, Group & Health Insurance Schemes)

Yes

- ✓ Personal enhancement & development schemes-, NSS, Facilities for physically challenged & slow learners; Tutor-Guardian Scheme, Grievance Redressal Cell, Entrepreneurship Cell, Remedial classes, Career Guidance Cell.

Yes

- ✓ Extracurricular activities: Calendar of activities (Sports, Youth Festival, cultural and literary events), Achievements, Awards

Yes

- ✓ Major student welfare initiatives over the past year

Yes

- Extension Activities

Extension of Class Room ,
 Extension Smart Class Rooms
 Extension of laboratories
 Development of play Grounds
 Extension of Botanical Garden Fencing of Botanical Garden
 Water supply With tub bell in Botanical Garden
 Bed ,almirah,and furniture in girls hostel needed.
 Procurement of PG Book and Equipments and computers

8. Student Achievements (5 pages)

Highlights the most significant academic and non-academic achievements of students over the past year. This can include major academic awards and scholarships received student research, and sports and other extracurricular activities. Focusses, in particular, on profiling top achievers and describing how resources provided by the college helped these students succeed.

- Research scholarship/ award

S.no	Name of the scholarship award/	Name of the recipient	Class	Area of research
NA				

CULTURAL

- Participation

S.no	Name of the event	District Level	State Level	University	National Level
1	Solo Song	√			
2	Songs	√			
3	Group Song	√			
4	Rangoli	√		√	
5	Poster Making	√		√	
6	Speech	√			
7	Essay writing	√			

- Awards and Achievements

Name of the student	Class	Event	Award/Achievement
Meena Singh	BSc II YEAR	Poster Making	Silver medal
Manjula Bharti	BA VI sem	Speech	Silver medal
Meena Singh	BSc VI sem	Rangoli	Silver medal
Jaya Shukla	BSc I Year	Speech	Silver medal

SPORTS

- Participation

S.no	Name of the event	Division Level	State Level	University/ National Level	International Level
1	Kho-kho female	√	√	√	
2	Cricket	√	√	√	
3	Kabaddi	√	√	√	
4	Sataranj	√	√	√	
5	Kabaddi female	√	√		
6	Kho-kho male	√	√	√	
7	Athletics	√	√	√	

- Awards and Achievements

Name of the student	Class	Sport	Award/Achievement
Shibbu Yadav	BA II Year	Kho-kho	Division level
Sakshi Mishra	BSC II YEAR	Badminton	Division level
Gaurav Mishra	BA I year	Badminton	Division level
Nikhil Sen/Karishma Soni	BSc I/II Year	Chess	Division level
Aradhana Dwivedi	BSc II	Kabbaddi	State level
Shibbu YADAV	BA II Year	Kabbaddi	State level
Arpit Gupta	BSc VI	Cricket	State level
Sachin Sen	BSc I year	Cricket	State level
Smriti Yadav	BSc II	Cricket	State level

9. Research Activities (4 pages)

Identifies major research themes, places these themes in their social and economic context, highlights major research achievements (publications, collaborations, intellectual property produced, external funding received etc.), and profiles top researchers. Lays out the research agenda and identifies themes for the coming year.

- Major research themes

S. No.	Department	Prioritized research area and expertise	Social/ economic context
		<i>No</i>	

- Major/Minor research projects

S. No	Name of the Faculty	Year	Title of the project	Name of funding Agency/ Industry	Total grant received
No					

- Papers presented in regional, national and international seminars/ conferences

S. No.	Name of the faculty	Regional/ State	National	International
1	English	Regional	National	
2	History	Regional,	National	International
3	Physics		National	International
4	Chemistry		National	International
5	Zoology		National	
6	Political science		National	International
7	Botany	Regional,	National	

• Publications in national/ international journals

S.No.	Name of the faculty	Name of the journal	Title of the paper	ISSN/ ISBN number /Impact factor
1	English	<p>1- The Indian Journal of basic and applied Research. Vol 2 issue I , Jan 2017. E-ISSN No: 2454-4639</p> <p>2- The Indian Journal of basic and applied Research. Vol 2 issue I , April 2017.</p> <p>3- A Journal of Asia for Democracy and Development . Vol-XVI (4) 2016</p>	<p>1- Nissan Ezekiel : a single force in Contemporary poetry in English</p> <p>2- Social Reality and the Cosmopolitan Culture in A Time to Change , Sixty Poems and The Third of Nissim Ezekiel a Study.</p> <p>3- Contradictions in state system and Indian society and Efforts for Quality life .</p>	<p>1. E-ISSN No: 2454-4639</p> <p>2. E-ISSN No: 2454-4639</p> <p>3. RNI No MP Bill /2001/7690 ISSN 0973 – 3833, Council for peace , Development and Cultural unity , Modi Niwas jain Mandir Road , Morena – 476001 INDIA</p>
2	Chemistry	International journal of latest research in science and technology.	Studies on physico chemical parameters on Ban Sagar Dam	Volume II to issue 3 page no. 20-22 May June 2013. ISSN 2278-5299.
3	Physics	<p>1-National seminar on solar activity and cosmic ray modulation at Govt P.G. College Satna (M.P.)</p> <p>2--National seminar on solar activity and cosmic ray modulation at Govt P.G. College Satna (M.P.)</p> <p>3- National seminar on cosmic ray modulation in inner heliosphere at Govt.Model SC. College Rewa (M.P.)</p> <p>4-- National seminar on cosmic ray modulation in inner heliosphere at Govt.Model SC. College Rewa (M.P.)</p> <p>5- National seminar on Solar plasma process and cosmic ray modulation at Govt.New Sc. College Rewa (M.P.)</p>	<p>A Study of relationship among various solar parameters during solar cycle 23.</p> <p>A Study of relationship among various solar parameters.</p> <p>Correlative study of sunspot no. and interplanetary magnetic field.</p> <p>Association of solar wind velocity and geomagnetic disturbance index during 2006-2011.</p> <p>Association and correlation between cosmic ray intensity and geomagnetic activity .</p>	<p>09-10 October 2010,Page No.116</p> <p>09-10 October 2010, Page No.143</p> <p>09-10 February 2013.Page no.72</p> <p>09-10 February 2013 Page no.71</p> <p>08-09February 2014 Page no.53</p>

		6- ultra scientist of physical science 7- Indian journal of applied Research	Study of time lag in long term cosmic ray intensity variation with sunspot number . Variation of Geomagnetic Disturbance (Ap) and Plasma Electric field (Vb) with sunspot number (Rz) during stream time for solar cycle 22&23.	Vol.24(3) B, 452-456, 2012 ISSN – 2249-555 X Vol – I Issue 12 sep 2012 P- 84
4	History	01-“kks/k lk/kuk e0 iz0 Hkkx II 2016 02-bZ0 vad 28 tqykbZ ls fnIEcj2016 03-]Central India journal of historical and Archaeological Research.Radha Publication New Delhi.	Mh ys;V }kjk of.kZr xqtjkr ds rhu C;kikj dsUnz] e;/dkyhu lkfgR; lk>k laLd`fr “kks/k i= 2017	(ISSN: 2231-3877) Page no. 346-348 (ISSN: 2277-4157) Page no.156-161
5	Political Science	1- An International Referred Journal Impact Factor – 01-9411-2015 2- An International Referred Journal Impact Factor – 01-9411-2015 3- International seminar B.H.U.Banaras UP	ernku O;ogkj dk IS}kafrd fo”ys’k.k uohu “kks/k lalkj vizSy ls twu 2016 Hkkjrh; lekt esa efgykvksa dh jktuhfrd psruk ,oa laEc}rk dk fo”ys’k.k ¼ernku O;ogkj ds lanHkZ esa vizSy ls twu 2016½ jkT; dh jktuhfr esa efgyk ernkrk	(ISSN 2320-8767) E-ISSN-2394-3793 Page no.51 (ISSN 2320-8767) E-ISSN-2394-3793 Page no.48 02-03 june 2016
6	Zoology	1- Trends in Biosciences 10(1), 2- The Indian Journal of Basic and Applied Research Volume 2 Issue 1 Jan 2017	1- Seasonal Phytoplankton Density of Gurma Bundh, Hanumana, Rewa.M.P 2- Assessment of seasonal variations of water quality parameters of Gurma Bundh, Hanumana, Rewa (M.P.)India	ISSN 0974-8431, 438-440- 2017 Online &print @www.ijbar.co.in
7	Botany	1-National Conference on Recent concept’s of biodiversity and biotechnology organized by Shri Rama Krishna college of commerce & science Satna (M.P.) 2-National Conference on Recent concept’s of biodiversity and biotechnology organized by Shri Rama	Survey of national park’s and sanctuaries and there biodiversity status in (M.P.) Evolution of organic method of cultivation of withania somnifera Lidunal under nursery and field condition’s Conservation of natural	24 -25 January 2009 , Page no.98 24 -25 January 2009 , Page no.113

		Krishna college of commerce & science Satna (M.P.) 3- Organized by Govt.Chhatrasal P.G. College Panna (M.P.)	resources with special reference to water conservation.	20 -21 February 2009 ,
8	Political science Dr. Lavkush Deependra	izdk'kd %& uo dkSfVY; 'kks/k laLFkku jhok ,oa vFkZ'kkL= v/;;u rFkk vuqla/kku dsUnz 'kkldh; Bkdqj j.ker flag egkfo- jhok ¼e-iz-½ 1- jk"V ^{ah} ; lsehukj 20 ,oa 21 fnIEcj 2- us'kuy lsehukj 26 ,oa 27 ekpZ 2011 3- jk'V ^{ah} ; 'kks/k laxks"Bh 22 ,oa 23 Qjojh 2008	1 oeZeku ifjis{; esa uDlyokn dh leL;k i` 277&- 281 2 lwpuk dk vf/kdkj vf/kfu;e 2005 dh izHkko'khyrk dk Lrj ¼jhok ftys fo'ks'k IUnHkZ esa ½ i` 282&286 1- iapk;rh jkT; O;oLFkk esa xzkeh.kks dk fodkl 'kkldh; LukrdsRrj egkfo ky; fuokMh+ ftyk Vhdex<+ 2- tsUMj vlekurk ,sfrgkfld ifjis{; 'kkldh; Bkdqj j.ker flag egkfo0 jhok 3- Hkkjrh; lekt esa efgykvksa dh izfLFkfr ,oa leL;k,as o lek/kku 'kkldh; Bkdqj j.ker flag egkfo0 jhok	ISSN – 0975-9220 March 2016 -2
9	Librarian	us'kuy lsehukj fnIEcj 19 ,oa 20 fnIEcj 2007 us'kuy lsehukj 21 ,oa 22 Qjojh 2009	Internet services for library and information center Status of information management in IT Driven Environment	fnIEcj 19 ,oa 20 fnIEcj 2007 21 ,oa 22 Qjojh 2009

- List of linkages/ Collaborations/ MOUs

No

- College Publications: Research Journal, Magazine, Newsletter

No

10. Human Resources (2 pages)

Highlights senior faculty and administrative appointments. Describes what new areas of activity (new courses, research areas, extracurricular activities etc.) and administrative improvements are enabled by these appointments.

1. Faculty and Administrative appointments: Teaching and Non-teaching

Positions	Teaching Faculty				Non Teaching Faculty	Technical Staff
	Prof	Promoted Prof.	Assistant Prof.	Guest Faculty		
Sanctioned by UGC/ University/ State Govt			15		14	04
<i>Filled</i>	0	0	0	15	08	04
Sanctioned by Management/ Janbhagidari Samiti/ Other authority	0	0	0	0	06	02
<i>Filled</i>						

2. Guest Faculty: subject-wise appointments

S.no.	Name of the Guest Faculty	Qualification	Subject
1	Dr. Yaduveer Prasad Mishra	M.A M.Phil .Ph.D.	English
2	Anjani kumar Suryavanshi	M.A NET	Economic
3	Dr. Jyoti Dwivedi	M.A Ph.D.	Hindi
4	Dr. Alima Shahnaz Siddiqui	M.A Ph.D.SET.	History
5	Smt. Roopa Sharma	M.lib , M. Phil	Librarian
6	Dr. Kamlesh kumar Jaiswal	MSc. M.phil. Ph.D.	Physics
7	Dr. Ritu Sen	M.A Ph.D.	Political
8	Dr. Lavkush Deependra	M.A Ph.D. ,NET	Political
9	Jamuna Namdeo	M.A, SLET ,NET.	Sociology

10	Dr.Manish Nirat	MSc. , Ph.D.	Zoology
11	Satendra Singh	MSc. M.phil	Zoology
12	Gajendra Singh	MSc. M.phil.	Botany
13	Safikun Nisha	MSc. M.phil.	Botany
14	Dr. Sanjay kumar Gupta	MSc. Ph.D.	Chemistry
15	Dr. Diwakar Sharma	MSc. . Ph.D.	Chemistry
16	Zaseem Ahmad	MSc. M.phil	Math

3. Annual improvement in academic, research & administrative Initiatives

Increase in passing parentage of students Increase in number of Working days minor Project got completed and submitted.

11.Events and Initiatives (5 pages)

Describes major events including seminars, conferences, competitions, student study trips etc. Focuses on what was achieved and learned, and how the college will follow up.

Describes significant academic, administrative, student support, fundraising, and other initiatives over the past year. The description of each initiative will be structured around the need for the initiative, how it was designed, what resources were used, what results were achieved, and which features of the initiative drove success.

Study tour to Baiga , Bhariya , village for sociology student

12.Institutional Development plan (4 pages)

Describes the college's activities over the past year under different schemes, discusses performance against strategic/institutional development plans and commitments over the previous year.

Indicator*	Baseline Value	Target for [current year]	Value as on 30 th September [current year]
		Null	

Role of Internal Quality Assurance Cell (IQAC) in academic audit and initiating quality assurance strategies and processes

--

13.Placement Report (3 pages)

Describes the college’s placement cell activities, placement rate and salary statistics, and lists major employers and sectors of employment (disaggregated by gender and course studied). Profiles successful alumni and identifies emerging placement trends.

Activities of Placement Cell

S.no.	Name of the activity	Name of the Resource Person/ agency	Date & Duration
		Nill	

Placement Details

S.no.	No. of Students Selected	List of employers/companies	Salary Package
		Nill	

Alumni Profile

S.no.	Name of Alumni	Employment status	Name of the organisation
1	C.P Dwivedi	Retd. Senior superintended of post office	post office
2	Dr. N.P. Dwivedi	M.B.B.S	Jaisinghnagar
3	Dr. Guru Prasann Singh Bhatiya	Coal mines	Gujrat
4	Dr. Om prakash Tiwari	GM. Coal mines	Thikari M.P.
5	Dr. RK Dwivedi	Principal	D.P.S. Sagar
6	Shri. P.N Tiwari	Nayab Tahseeldar	Anuppur

7	Shri. Deepak Tiwari	Nayab Tahseeldar	Umariya
8	Shri. R.K Gautam	Advocate	Jaisinghnagar

14. Innovations and Best Practices

15. SWOC Analysis (strength , weaknesses, Opportunity and Challenges

This college imparts education to students with a view to empower them through the light of knowledge and has been serving generation with its unique and innovative ways of teaching learning and reaching out to the society. It illuminates the heart and mind of the students and gives leadership in standing for a good cause. The young students educated in this campus go out with a purpose to contribute to the society by doing justice to their profession, building ideal families and rearing a new generation with values.

- One of the main reasons of its popular acceptance and recognition is that it is a only college situated in this tribal belt.
- Inspiring quotes are displayed on the walls of the building to motivate the students and faculty both.
- Numerous facilities, scholarships and financial aids are available to meritorious and deserving students.
- Unlimited extension opportunities to students with an ardent sense of responsibility, Rural Camp, Eco-friendly, Awareness rallies, skill oriented programmes.
- Institution has qualified and competent staff and faculty which continuously works to achieve success.
- Strong mentoring and student support system takes care of all students.
- Focus on personality development of each student through development of positive attitude, leadership qualities and self awareness.
- College has Clean, Green and pollution free campus.
- Continuous evaluation of students by CCE, helping them to assess themselves.
- College has well equipped laboratories in the science subjects and well equipped Computer lab also.
- College has Common Room for girls.
- College has Shikshak Abhibhavak Yojana to interact with parents.
- College has elaborate system of Feed Back received from the students on curriculum and teaching.
- College organizes different Campaigns for awareness, both in rural and urban areas through NSS. College provides a variety of Scholarships for financially weak.

WEAKNESS

- Lack of permanent staff.
- Research facilities are not up-to the mark.
- College needs more infrastructural facility like Building, Classrooms, Laboratories etc. as all the Gross Enrolment Ratio is far increasing.
- Poor execution of student centric activities due to very low financial status of the students.

OPPORTUNITY

- Increasing awareness towards student .
- Career guidance to all students.
- Personality development and mentoring.
- Providing Expertise to the society by development Consultancy services.
- The students are made efficient through various self employment skill.

CHALLENGES

- High Teacher student ratio.
- Students belong to the orthodox families, (Early marriage and other conservative views of the families) create difficulty in imparting scientific knowledge which is another challenge that faculty faces.
- Commuting time between their home and college is more since they come from far places and transport facilities is not there.
- For good placement grooming the students and upgrading the communication skill.
- Limitation and constraint in government financial support.
- Posting regular faculties against vacant posts.

FUTURE PLAN

- College has sent a proposal for providing Bus facility for the students.
- Proposals for new vocational and Job oriented courses.
- Expansion of laboratories.
- Construction of new buildings to meet out requirements.
- Amenities for partially blind students.
- Special toilets for physically disabled students.
- More innovations in teaching, learning process.
- More transparency in all operating mechanism.

16.Looking Ahead (3 pages) Future Plans

Lays out the college's priorities and goals over the coming year. Describes key initiatives planned, what each initiative is expected to achieve, and how it will contribute to the college's long term development.

Key Initiatives Planned/ implemented

S. No	Head (administrative/ academic, etc)	Nature of proposal	Expected Outcome
		<ol style="list-style-type: none">1. Development of Institute as Quality Education Centre<ol style="list-style-type: none">a. Establishment of e- library.b. Up gradation of existing labs.c. Extension of classrooms, procurement books and Equipments.2. Improving the employability of students<ol style="list-style-type: none">a. Providing skill oriented education / trainingEnhancing sports3. Establishment of eco-friendly environment	

17. Appendix: Institutional Performance Data and Financial Reports

Provides key data on the institution and its performance, including achievement against strategic plan targets and financial reports. This section is mandatory. All data fields must be completed, in the format and as per the instructions attached.

Part II

Appendix: Institutional Performance Data and Financial Reports (all part II data kindly fill in attached excel sheet)

1. Sanctioned seats and enrolment.

(a) Sanctioned Seats					
	SC	ST	Other Reserved Categories	General	Total
Undergraduate	201	590	347	334	1472
Postgraduate	19	35	28	41	123
PhD	-	-	-	-	-

Data Source: AISHE

(b) Enrolment							
		Undergraduate			Postgraduate		PhD
		Year 1	Year 2	Year 3	Year 1	Year 2	
SC	Male	34	40	31	07	04	-
	Female	45	25	26	07	01	-
ST	Male	93	77	48	07	08	-
	Female	159	108	105	13	07	-
Other Reserved Categories	Male	71	44	43	07	09	-
	Female	94	58	37	09	03	-
General	Male	49	36	25	10	04	-
	Female	98	74	52	16	11	-
Total	Male	247	197	147	31	25	-
	Female	396	265	220	45	22	-

Data Source: AISHE

Number of sanctioned seats by discipline group and enrolment in the 1st year as on September 30th [current year]				
Discipline Group	Undergraduate		Postgraduate	
	Sanctioned Seats	Enrolment	Sanctioned Seats	Enrolment
Arts	350	383	35	42

Commerce	-	-	-	-
Criminology and Forensic Science	-	-	-	-
Cultural Studies	-	-	-	-
Defence Studies	-	-	-	-
Design				
Disability Studies				
Education				
Fashion Technology				
Fine Arts				
Fisheries Science				
Foreign Languages				
Gandhian Studies				
Home Science				
Indian Languages				
IT & Computer				
Journalism and Mass Communication				
Law				
Library and Information Science				
Linguistics				
Management				
Marine Science and Oceanography				
Oriental Learning				
Physical Education				
Religious Studies				
Science	220	232	30	3
Social Science				
Social Work				
Women Studies				

Data Source: AISHE

2. Transition and on-time graduation

(a) Transition from the 1st year to the 2nd year (Undergraduate)				
		Number of students admitted to the 1 st year in [the previous academic year] (*)	Of (*), the number of students currently enrolled in the 2 nd year who:	
			Passed all subjects in the 1 st year	Were Allowed to Keep Terms
SC	Male	42	40	01
	Female	28	25	02
ST	Male	90	77	08
	Female	125	108	06
Other Reserved Categories	Male	59	44	09
	Female	59	58	00
General	Male	55	36	09
	Female	82	74	06

Total	Male	246	197	20
	Female	294	265	17

Data Source: AISHE, examination results declared by [affiliating university/autonomous college]

(a) Transition from the 1st year to the 2nd year (Postgraduate)				
		Number of students admitted to the 1 st year in [the previous academic year] (*)	Of (*), the number of students currently enrolled in the 2 nd year who:	
			Passed all subjects in the 1 st year	Were Allowed to Keep Terms
SC	Male	08	04	04
	Female	01	01	Nil
ST	Male	08	08	Nil
	Female	08	07	01
Other Reserved Categories	Male	11	09	02
	Female	03	03	Nil
General	Male	05	04	01
	Female	11	11	Nil
Total	Male	32	25	07
	Female	23	22	01

Data Source: AISHE, examination results declared by [affiliating university/autonomous college]

(b) On-time graduation (Undergraduate) (17-18)			
		Number of students admitted to the 1 st year in [year t-3] (*)	Of (*), the number of students who passed all final year examinations for the previous academic year
SC	Male	34	25
	Female	45	20
ST	Male	93	32
	Female	159	90
Other Reserved Categories	Male	71	37
	Female	94	24
General	Male	49	18
	Female	98	47
Total	Male	247	112
	Female	396	181

Data Source: AISHE, examination results declared by [affiliating university/autonomous college]

(b) On-time graduation (Postgraduate)			
		Number of students admitted to the 1st year in [year t-2] (*)	Of (*), the number of students who passed all final year examinations in the current year
SC	Male	07	04
	Female	07	04
ST	Male	07	06
	Female	13	09
Other Reserved Categories	Male	07	05
	Female	09	06
General	Male	10	08
	Female	16	14
Total	Male	31	27
	Female	45	39

Data Source: AISHE, examination results declared by [affiliating university/autonomous college]

3. Faculty and administrative staff in position and training

(a) Faculty and administrative staff in position as on 30th September, [current year]							
		Reserved					Unreserved
		SC	ST	MP Residents	Females	Others	
Assistant Professor	Sanctioned						
	Filled (Regular)						
	Filled (Contract)						
	Guest Lecturers	03	Nil	All	05	07	06
Associate Professor	Sanctioned						
	Filled (Regular)						
	Filled (Contract)	NA	NA	NA	NA	NA	NA
	Guest Lecturers	NA	NA	NA	NA	NA	NA
Professor	Sanctioned	NA	NA	NA	NA	NA	NA
	Filled (Regular)	NA	NA	NA	NA	NA	NA
	Filled (Contract)	NA	NA	NA	NA	NA	NA
	Guest Lecturers	NA	NA	NA	NA	NA	NA
Admin. Staff (all)	Sanctioned	NA	NA	NA	NA	NA	NA
	Filled (Regular)	NA	NA	NA	NA	NA	NA
	Filled (Contract)						
Accountant	Sanctioned			01		01	
	Filled (Regular)			01		01	
	Filled (Contract)						

Data Source: AISHE

(b) Training of faculty and administrative staff between October 1st [previous year] to September 30th [current year]				
		Leadership and management training	Training in the area of academic specialisation	Other training
Assistant Professor	Number trained	N/A	N/A	N/A
	Avg. number of days	N/A	N/A	N/A
Associate Professor	Number trained	N/A	N/A	N/A
	Avg. number of days	N/A	N/A	N/A
Professor	Number trained	N/A	N/A	N/A
	Avg. number of days	N/A	N/A	N/A
Administrative Staff (all)	Number trained	N/A	N/A	N/A
	Avg. number of days	N/A	N/A	N/A
Accountant	Number trained	N/A	N/A	N/A
	Avg. number of days	N/A	N/A	N/A

Data Source: Compiled from training certificates submitted by faculty/administrative staff

(c) Faculty qualifications as on 30th September, [Current Year]					
		PhD	Postgraduate	Undergraduate	Others
Assistant Professor	Regular	Vacant	NA	NA	
	Contract		NA	NA	
	Guest Lecturers	09	NA	NA	07
Associate Professor	Regular	Post do not sanctioned	NA	NA	
	Contract	NA	NA	NA	
	Guest Lecturers	NA	NA	NA	
Professor	Regular	NA	NA	NA	
	Contract	NA	NA	NA	
	Guest Lecturers	NA	NA	NA	

Data Source: AISHE

4. Student support services

(a) Financial support received (from all sources) by students in the college between October 1 st [previous year] to September 30 th [current year]							
		Undergraduate		Postgraduate		PhD	
		Number	Average Value (Rs.)	Number	Average Value (Rs.)	Number	Average Value (Rs.)
SC	Male	168	19500	15	20500	-	-
	Female	240	24500	20	20500	-	-
ST	Male	183	19500	11	20500	-	-
	Female	419	24500	08	20500	-	-
Other Backward	Male	166	6400	16	7400	-	-
	Female	203	11400	12	7400	-	-
General	Male	01	2500	Nil	Nil	-	-
	Female	74	5000	Nil	Nil	-	-
Total	Male	518	47900	42	48400	-	-
	Female	936	65400	40	48400	-	-

Data Source: AISHE (scholarship, Gaon ki Beti Yojana, vikramaditya, aawas yojana, science dev.yojna. Awagaman yojna.)

(a) Financial support received, from the DHE, by students in the college between October 1 st [previous year] to September 30 th [current year]							
		Undergraduate		Postgraduate		PhD	
		Number	Average Value (Rs.)	Number	Average Value (Rs.)	Number	Average Value (Rs.)
SC	Male	-	-	-	-	-	-
	Female	06	5000	-	-	-	-
ST	Male			-	-	-	-
	Female	02	5000	-	-	-	-
Other Backward	Male			-	-	-	-
	Female	34	5000	-	-	-	-
General	Male			-	-	-	-
	Female	73	5000	-	-	-	-
Total	Male			-	-	-	-
	Female	115	570000	-	-	-	-

Data Source: College records, DHE (Gaon ki Beti Yojana, Awagaman yojna.)

(b) Hostel occupancy as on 30th September, [Current Year] (all hostels)		
Capacity		
Males:	Number of residents	
Females:		
SC	Male	Nil
	Female	Nil
ST	Male	Nil
	Female	Nil
General	Male	Nil
	Female	Nil
Total	Male	Nil
	Female	Nil

Data Source: Hostel register verified against fee receipts on record

(c) Hostel occupancy as on 30th September, [Current Year] (girls only hostels opened after _____)	
Capacity	Number of residents
SC	Nil
ST	Nil
General	Nil
Total	Nil

Data Source: Hostel register verified against fee receipts on record

5. Examination Results

(a) Examination results for [previous academic year] (undergraduate)											
		SC		ST		Other Reserved Categories		General		Total	
		M	F	M	F	M	F	M	F	M	F
1st year	Appeared	34	45	93	159	71	94	49	98	247	396
	1 st division	14	20	30	48	20	35	16	30	80	133
	2 nd Division	15	16	43	70	25	30	20	48	103	164
	3 rd Division	05	09	20	41	26	29	13	20	64	99
2nd year	Appeared	40	25	77	108	44	58	36	74	197	265
	1 st division	10	06	29	28	10	18	11	28	60	80
	2 nd Division	20	14	40	40	20	28	15	29	95	111
	3 rd Division	10	05	08	40	14	12	10	17	42	74
3rd year	Appeared	31	26	48	105	43	37	25	52	147	220
	1 st division	15	10	15	40	20	15	15	22	65	87
	2 nd Division	08	10	25	40	15	15	08	20	56	85
	3 rd Division	08	06	08	25	08	07	02	10	26	48

Data Source: AISHE, Examination results declared by [affiliating university/autonomous college]

(a) Examination results for [previous academic year] (postgraduate)											
		SC		ST		Other Reserved Categories		General		Total	
		M	F	M	F	M	F	M	F	M	F
1st year	Appeared	04	01	08	07	09	03	04	11	25	22
	1 st division	01	00	03	05	06	02	02	05	12	12
	2 nd Division	03	01	05	02	03	01	02	06	14	10
	3 rd Division	Nil	Nil	Nil	Nil	Nil	Nil	Nil	Nil	Nil	Nil
2nd year	1 st division	03	1	5	4	6	1	2	6	16	12
	2 nd Division	1	Nil	2	2	2	1	2	5	7	8
	3 rd Division	Nil	Nil	1	1	1	1	Nil	Nil	2	2

Data Source: AISHE, Examination results declared by [affiliating university/autonomous college]

6. Placement and student tracking

(a) Placement and Tracking of Students who graduated in [previous academic year] (Undergraduate)						
		Number of students who graduated in [the previous academic year] (*)	Of (*), the number of students who were successfully tracked and are:			
			Employed/ Self-employed	In education/ training	Unemployed	Not in the labour force
SC	Male	nil	nil	nil	nil	nil
	Female					
ST	Male					
	Female					
General	Male					
	Female					
Total	Male					
	Female					

Data Source: Records of the college placement cell

(b) Placement and Tracking of Students who graduated in [previous academic year] (Postgraduate)						
		Number of students who graduated in [the previous academic year] (*)	Of (*), the number of students who were successfully tracked and are:			
			Employed/ Self-employed	In education/ training	Unemployed	Not in the labour force
SC	Male	nil	nil	nil	nil	nil
	Female					
ST	Male					
	Female					
General	Male					
	Female					
Total	Male					
	Female					

Data Source: Records of the college placement cell

7. PhDs Awarded

Number of PhDs awarded between October 1st [previous year] to September 30th [current year]	
Discipline Group	Number
Arts	nil
Commerce	
Criminology and Forensic Science	
Cultural Studies	
Defence Studies	
Design	
Disability Studies	
Education	
Fashion Technology	
Fine Arts	
Fisheries Science	
Foreign Languages	
Gandhian Studies	
Home Science	
Indian Languages	

IT & Computer	
Journalism and Mass Communication	
Law	
Library and Information Science	
Linguistics	
Management	
Marine Science and Oceanography	
Oriental Learning	
Physical Education	
Religious Studies	
Science	nil
Social Science	
Social Work	
Women Studies	
Literature	
Other	
All disciplines	

Data Source: AISHE

8. Research and consultancy

Revenue generated through externally funded research and consultancies over [previous financial year]		
Discipline Group	Number of active projects	Total Revenue Generated (Rs. lakhs)
Arts	Nil	nil
Commerce		
Criminology and Forensic Science		
Cultural Studies		
Defence Studies		
Design		
Disability Studies		
Education		
Fashion Technology		
Fine Arts		
Fisheries Science		
Foreign Languages		
Gandhian Studies		
Home Science		
Indian Languages		
IT & Computer		
Journalism and Mass Communication		
Law		
Library and Information Science		

Linguistics		
Management		
Marine Science and Oceanography		
Oriental Learning		
Others / Inter-disciplinary		
Physical Education		
Religious Studies		
Science	Nil	nil
Social Science		
Social Work		
Veterinary and Animal Sciences		
Women Studies		
All disciplines		

Data Source: College/university records

Number of papers published in peer-reviewed journals between October 1 st [previous year] to September 30 th [current year]			
Discipline Group	Number of papers published		Number of published papers through cross-institute research collaboration
	International Journals	National Journals	
Arts	Nil	Nil	nil
Commerce			
Criminology and Forensic Science			
Cultural Studies			
Defence Studies			
Design			
Disability Studies			
Education			
Fashion Technology			
Fine Arts			
Fisheries Science			
Foreign Languages			
Gandhian Studies			
Home Science			
Indian Languages			
IT & Computer			
Journalism and Mass Communication			
Law			
Library and Information Science			
Linguistics			
Management			
Marine Science and Oceanography			
Oriental Learning			
Others / Inter-disciplinary			
Physical Education			
Religious Studies			

Science	Nil	Nil	Nil
Social Science			
Social Work			
Women Studies			
All disciplines			

Date Source: College records based on published papers submitted by faculty

9. NAAC accreditation and UGC autonomy

	Date of Application (LOI & SSR submitted)	Date on which accreditation was received	Grade	Valid till
1 st Cycle	13-05-2014	-	-	-
2 nd Cycle	-	-	-	-
3 rd Cycle	-	-	-	-

Date of submission of the Annual Quality Assurance Report for the current year: _____.

Does the college have currently valid UGC autonomy? _Not.

10. Institutional Trends

Variable	Baseline Value	[Year 1]	[Year 2]	[Year 3]	[Year 4]	Current Year
Percentage of sanctioned seats in the 1 st year filled (undergraduate, all categories)	650	89%	93%	97%	100% + 10% extra	100% + 10% ex
Percentage of sanctioned seats in the 1 st year filled (postgraduate, all categories)	65%	100%	Nil	nil	nil	nil
Transition rate from the 1 st year to the 2 nd year (undergraduate, all categories)	650	85%	91%	94%	97%	99%
On-time graduation rate (undergraduate, all categories)	643	85%	91%	94%	97%	99%
Transition rate from the 1 st year to the 2 nd year (post graduate, all categories)	65	100%	100%	100%	-	100%
On-time graduation rate (postgraduate, all categories)	NA					

Regular faculty in position rate (all levels, reserved categories)	NIL					
Regular faculty in position rate (all levels, unreserved categories)	NIL					
Percentage of regular faculty with PhDs (all levels)						
Employment rate of graduates from the previous academic year (undergraduate, all categories)						
Employment rate of graduates from the previous academic year (postgraduate, all categories)						
Percentage of total revenue generated through externally funded research						
Number of papers published in peer-reviewed, international journals						

Source: Tables under section 1-8.

11. Financial Reports

Name and registration number of the auditor - **Dr. Daljeet singh**

Number of audit observations recorded by the auditor- **No - 014943C (Shahdol)**

Number of audit responses found satisfactory, as certified by the project directorate **402925.**

Certified audit reports as per the standard Chart of Accounts to be attached. **(Attached)**

12. All India Survey of Higher Education

Date on which all applicable fields of the Data Collection Format for the All India Survey of Higher Education were completed and submitted **-20 August 2019**

Instructions

- All data is to be reported as on 30th September of the current year.
- Postgraduate courses refer to courses at the Masters and MPhil level.
- The number of sanctioned seats is the number of students the college is authorized, by the UGC/DHE/affiliating University, to admit in the first year of its degree programs.

- The number of sanctioned faculty posts is the number of faculty the college is authorized, by the UGC/DHE/affiliating University, to recruit on a full-time basis.
- Enrolment is defined as the number of students who have paid their admission fees for joining a degree program by September 30 of the respective academic year.
- Admission is defined as the number of students who have paid their admission fees for joining a degree program, in the first year, by September 30 of the respective academic year and who have never been enrolled in that degree program previously.
- Other Reserved Categories include all categories of students (for e.g. sports quota, extracurricular quota, residents of Jammu and Kashmir etc.) for whom a fixed percentage of sanctioned seats are reserved.
- Examination results are to be reported for examinations held in the previous academic year, and the results for which were declared by 30th September of the current year.
- Allowed to keep terms refers to students who did not pass all subjects in the previous year but were allowed to transition to the next year of their respective degree programs.
- Regular faculty refers to faculty employed on open-ended, full-time contracts as per UGC norms.
- Contract faculty refers to faculty employed on fixed term, full-time contracts as per UGC norms.
- Guest Lecturers refers to faculty employed on a per lecture or per day basis as per UGC norms.
- Data on scholarships is to be reported on all scholarships awarded between 1st October of the previous year and 30th September of the current year.
- A hostel seat is considered occupied if a student has been allotted a seat in the hostel and the student, to whom the seat was allotted, has paid the hostel fee for the current academic year.
- Examination results refers to the average score obtained by a student, in the respective academic year, across all exams that are used to assess whether the student has met the requirement of the degree program in which he/she is enrolled.
- Student tracking refers to having up to date contact information (mobile phone and/or email address) and status (employment, unemployed, in formal education or training, not in the labour market/other) for each student for up to six from the end of the academic year when the student passed out (graduated).
- Externally funded research and consultancies refer to research and/or development funded through consultancy contracts or partnerships with a sponsor or purchaser who is external to the institution.
- A peer-reviewed journal is one that subjects an author's research to review and evaluation by others who are experts in the same field, before the research is published.
- An international journal is one that has an International Standard Serial Number (ISSN) issued by the ISSN International Centre.
- A paper is said to be published through cross-institute research collaboration if the primary affiliation of at least two authors is to different colleges/institutions.

- The institutional performance indicators common across all institutions can be found in the PIP. Institution-specific performance indicators can be found in the MOU signed between the Institution and the Department of Higher Education.
- The standard Chart of Accounts refers to the standard format for audit reports as notified by the Department of Higher Education through its orders.

Daljeet Singh & Associates
Chartered Accountants

Hotel Surya Campus,
Burhar Road, **Shahdol (M.P.)**
Cell : 9407812977

AUDIT COMPLETION REPORT

To,
The Principal,
Government College,
Jaisinghnagar, Dist. Shahdol (M.P.)

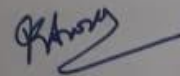
Respected Sir

We have completed the audit of the Cash Books presented before us, related to JanBhagidari A/c, PD & AF A/c, Govt. Cash Book, NSS A/c, Examination A/c and UGC A/c for the FY 18-19. We are in the process of preparing the audit report and notes related there to, which shall be provided to you by next week.

For : Daljeet Singh & Associates

Chartered Accountants

014943C



CA Daljeet Singh Arora

Mem No. : 402925

Date: 01-06-2019

Place: Shahdol



