

GOVT. DEGREE COLLEGE JAISINGHNAGAR Distt-Shahdol(M.P.) – 484771

Annual Report 2016-17

This format outlines the annual reports to be published by all colleges in the Madhya Pradesh on their websites, by October 31st of each year. Part I is intended as a guide and colleges are free to alter the contents and format as they see fit. Part II, the Appendix (Institutional Performance Data and Financial Reports), is mandatory and colleges are required to report all data as per the attached format and instructions.

Important Information –

- Name of the college – Govt Degree College Jaisinghangar Distt – Shahdol (M.P.)
- Place of the college – Jaisinghnagar
- District - Shahdol
- Division - Shahdol
- Year of establishment of college - 1984
- Name and Contact details(Mail id , Phone) of Principal – [Dharmendra.Dwivedi04@gmail](mailto:Dharmendra.Dwivedi04@gmail.com) Mob - 9425344422
- Name , Post and Contact details of (mail id, Phone no.) of Reporting In charge – Dr. Dharmendra kumar dwivedi(Professor of Chemistry) mob - 9425344422
- Date of report submission -

Part I

1. **The Principal's Report (2 pages)-** Highlights the key activities, events, and successes of the past year and briefly describes major new initiatives to be undertaken over the next year.

The admission is through online process which is absolutely transparent and in accordance with the reservation cum merit norms of the state government. Slow learners are facilitated with remedial classes while advance learners are given special assignments and encouraged to perform better. The college practices an academic calendar for the smooth and timely functioning of all the academic activities.

The primary goal of the institution is to train young student to become a part of the sustainable development including socio-economic development by achieving gender equality through women empowerment and their full enlightenment.

Fresh students are made comfortable through zero classes organized by the college in which teachers from different faculties teach and guide students to develop their inter disciplinary skills.

In the semester system there is provision of CCE, Projects works and emphasis on employment guidance and skills development, career training computer literacy and value based education as an integral part of the curriculum at and levels.

As per existing mechanism of upgrading curriculum, the college receives feedback from the students and the stakeholders, which is incorporated in the curriculum to upgrade the teaching-learning process. The whole act of curriculum up gradation is duly mentioned and analysed by IQAC..

Regular special meetings are arranged with parents, public representatives, and students to obtain feedback for the enrichment and supplementation of teaching learning process to realize the curriculum. For monitoring and evaluating the quality of enrichment programs, the college has IQAC cell which regularly works towards achieving excellence in teaching learning process.

The institution has highly qualified and competent faculty members. They are recruited as per the UGC/ MP government rules. The teachers attend orientation and refresher courses regularly which leads to their knowledge up gradation and skill enrichment. The teachers participate in national and international Conferences, Seminars, Workshops and training programs organized by the Administrative and Management Academy of M.P. and other universities, colleges and the institutions of the country. The Financial support is available to the students in the form of state government scholarships and schemes for SC, ST and OBC, students. Various kinds of financial assistance is provided to the needy and deserving students in the form of fee and railway concession. Majority of students avail financial aid from the Government scholarship schemes. Gold medals and certificates are given to the meritorious students. The College has always been working for the poor students by giving them special consideration during admissions and by providing scholarship and financial assistance and the Book Bank facility.

The IQAC and Swami Vivekanand Career Counselling & have successfully organized a number of workshops and Career Fairs for the welfare of the students. The IQAC provides personal counselling to the students. The college has also strengthened counselling and placement services with the establishment of "Swami Vivekanand Career Counselling cell since 2006.

The different academic bodies meet regularly to find out the strategy for enhancement of teaching and learning. College has definite plans to utilize its available

human resource and to fill the gap where such resource is needed and is not available. The vacant posts are fulfilled by guest faculty.

Every teacher of the college maintains her/his teaching diary. The diary is examined by the Head of The Departments and Principal respectively. Performance of teacher is estimated on the basis of student attendance. In every semester, results of the students are analysed and teacher's performance is decided on the basis of result also.

The college has well maintained library with nearly 20,000 books (both text and reference books). The institution has Career and Counselling Cell, well mechanized grievance cell. The college provides a variety of scholarships for students support and progression. Sports department also plays a key role in students progression.

The college has two borewells for water supply to fulfill the need of drinking water as well as to maintain the botanical garden. There is sufficient number of drinking water (RO) facilities provided to the students and faculty members both in every block like Science, Arts and Library. Continuous water supply is maintained in the toilets and washrooms. The college has installed 05 KVA Generator for uninterrupted power supply. The college has a well maintained Botanical Garden flourished with a large number of medicinal plants. The garden presents an curious example of Biodiversity.

Students in this college have participated at various inter university and state level sports events during last five years. The college is always trying to maintain the campus clean, green, and minimize the use of non-degradable hazardous products.

The college has well managed functioning system for student support and progression. There exists different committees and cells to operate student support and progression. The College provides a variety of scholarships for student support and progression, for Post Matric Scholarship, Gaon ki Beti (For Women only), Pratibha Kiran Yojana (For Women only), Vikramaditya, Dr. Shyama Prasad Mukharjee Scholarship, Scholarship for Minority Students, Scholarship for persons with disability, Inspire Scholarship, National merit scholarship.

The college has planned and designed its various programmes and course to achieve the purpose. The mission statement of college obviously defines the distinctive characteristic, as it has an objective to develop an eclectic, multi-skilled education for students.

2. Overview (1 page)

(i) Vision, Mission and Objectives of the college

Vision

To be an institute of academic excellence with a commitment for quality education with ethics and values.

Mission

Empowering students with contemporary knowledge to make them worthy citizens. Providing holistic and value based education with soft skills training to enhance their employability.

Objective

In order to fulfill its stated vision, mission and motto the Govt. Degree College Jaisinghnagar is Committed to

- ❑ Academic excellence: Our primary objective is to enable every student to cope up with the latest developments in contemporary, national and global level through effective transaction of the curricular and co-curricular aspects .
- ❑ The College is focused on the all round development of the students' personality through proper education and exposure to the vast treasure of knowledge; sports facilities and by providing platforms for their socialization.
- ❑ Socially responsible Citizen: College inculcates a sense of civic responsibility, social commitment, and moral accountability among the students through social activities to with exposure to human rights, value system, culture, heritage, scientific temper and environment

Govt. Degree College Jaisinghnagar, Distt.-Shahdol (M.P.), established in 1984. It is affiliated to the Awdhesh Pratap Singh University, Rewa M.P., Recognized by the University grants commission under 2(f) and 12(b) of UGC Act 1956. Today the college offers two undergraduate courses to enable young scholars with an eclectic, holistic and quality education and value based knowledge amongst the tribal student of this area. Curriculum is prepared and designed by the Central Board of Studies, Bhopal (M.P.). The college offers regular degree courses in B.A. & B.Sc. PG courses MSc in Chemistry M.A in political science . College is Situated Gopalpur Road jaisinghangar Distt- Shahdol pin 484771 (M.P.) .

(iii) History of the college with significant milestones

The college is spread over seventeen acres with sufficient class rooms, laboratories, library and infrastructural facilities including play ground for various outdoor sports like- Cricket Volley Ball, Basket. Ball, Kho-Kho, and indoor games like Badminton, Table Tennis and Chess. It has multipurpose field for athletics the college is full of greenery with a large number of green plants, trees. The college has 50 seated Girls hostel which is under Constrution are well maintained with sufficient bathrooms, toilets, RO drinking water. The college organizes cultural activities providing the platform through Yuva Utsav by which the students expose their various talents in Singing, Dancing, Acting, Speaking, Group Discussion, Mehndi, clay modeling etc.

The entire infrastructure is well maintained under the supervision of Principal of the College with the assistance of the maintenance committee.

(iv) Faculties and major disciplines

The college provides comprehensive information to the students about its goal, objectives, admission rules, courses offered, fee structure, scholarship and the available facilities through its prospectus, calendar and website. The average success rate of students during the last four years have been more than 90%.

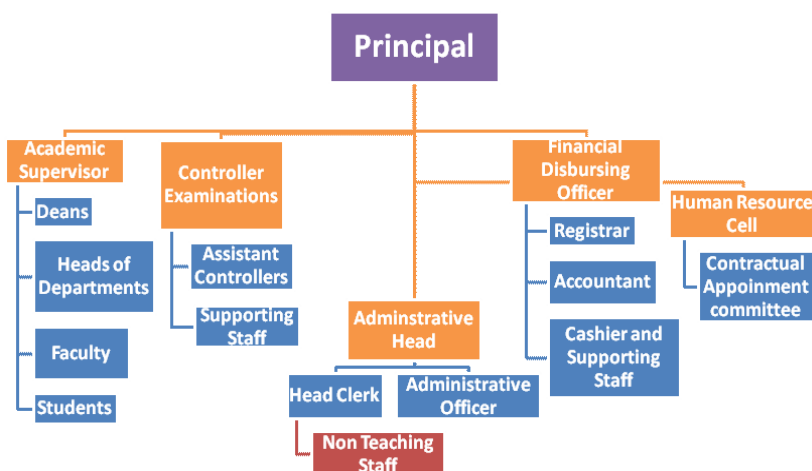
teachers are also introduced to modern technology. The regular feedback from the students help faculty members to enhance their professional competency. Out of fourteen faculty members Ten members are Ph.D. degree holders and six are M. Phil. degree holders.

3. Senior Management Team and Board of Governors (1 page)

Lists the members of the senior management team (Principal, Registrar, Deans etc.) and members of the Board of Governors including their designations and professional backgrounds.

Administrative Hierarchy

For example -:



List of Chairperson/members of Statutory Bodies like Board of Governors/ Executive Committee/ Academic Council/ Janbhagidari Samiti, etc

4. Admission Statistics (1 page)

- The number of applicants at the UG and PG level who ranked the college as their 1st, 2nd and 3rd preference, the number of applications received for PhD courses, and the number of students admitted at each level as per the following format.

Applications	UG	PhD
Applications that ranked the college as the 1 st preference	461	NA
Applications that ranked the college as the 2 nd preference	305	
Applications that ranked the college as the 3 rd preference	188	
Total number of applications received	1000	
Number of students admitted	954	

Data Source: E-pravesh portal, records of the affiliating university

- A brief demographic profile of students admitted (in terms of gender, caste, whether from MP etc.)

Name of the Course	Gender	Category	% of students from the State	% of students from other states
B.A	247 MALE 279 FEMALE	ST – 47% SC – 12% OBC – 24% GEN – 17%		
BSc	184 MALE 244 FEMALE	ST – 30% SC – 15% OBC – 25% GEN – 30%		

5. Academic Programs: Core Programs - UG & PG

Core programs at UG level

Stream	Name of the Core Program	Eligibility	Optional subjects
Arts	Bachelor of Arts	10+2 from a recognized Board OR 10+2 with relevant vocational course from M.P. Board	Foundation course + a group of 3 optional subjects
BA	B.A I, YEAR III sem V sem	10+2 II Sem IV Sem	HINDI LIT , English lit , political Science , Economics, Sociology , History
BSc	BSc I Year Biology III sem V sem BSc math III Sem V Sem	10+2 II Sem IV Sem 10+2 II Sem IV Sem	Zoology , Botany, Chemistry Chemistry , physics , math

Core Options at PG level

Faculty	Name of the Core Program	Eligibility	Subject Options
Nil	Nil	Nil	Nil
Nil	Nil	Nil	Nil
Nil	Nil	Nil	Nil

M.Phil/ Ph.D. Programs

S.no.	Subject	Eligibility	No. of scholars registered
Nill	Nill	Nill	Nill

PG Diploma/ Diploma/ Certificate/ Self-financed/ Skill based Vocational/ Short term courses

Name of the Course	Department	Duration	Fees	Seats
Nill	Nill	Nill	Nill	Nill

6. Academic Calendar 20 16-2017

Academic Work	First/ Third/ Fifth Semester	Second/ Fourth/ Sixth Semester
Orientation Classes/Zero Classes/SWOT analysis	1 Jul to 13 Jul 2016	02 January 2017 ,
Teaching and Continuous Comprehensive Evaluation	14 Jul to 07 Nov 2016	03 January to 25 April 2017
CCE Schedule	04 th week of Sept- 2016	11 week of March 2017
Preparation Leave	08 Nov to 14 Nov 2016	26 April to 27 April 2017
Practical Exams (Graduation/Post Graduation)	15 Oct to 07 Nov 2016	25 March to 25 April 2017
Semester and ATKT Exams	15 Nov to 21 Dec 2016	28 April to 26 May 2017
Declaration of Examination Results	31 Dec 2016	15 Jun 2017
Semester Break (for students)	22 Dec to 31 Dec 2016	27 May to 30 Jun 2017
Semester Break (for teachers)	22 Dec to 31 Dec 2016	27 May to 15 Jun 2017

7. The Student Experience (4 pages)

Briefly describes student life in the college:

- Infrastructural facilities available to students - Classrooms, Smart classrooms, laboratories and equipment, Common Research Lab, Hostel; Canteen; Garden; Students common room, Auditorium, Sports Complex & other facilities

College Infrastructural facilities available to students – 15 Classrooms, , 04 laboratories and equipments are available . Girls Hostel; is **Under** Garden Construction. ; Girls common room & play Ground for Cricket Kho-kho kabaddi , volley ball , is available and other facilities.

- Library as a learning resource- advisory committee, its composition, facilities & services (e & print), annual improvement initiatives

College library With 20,000 Books and Text Books and one Reading Room is also available . E- library and Wi-fi is Required .

- Student support services:
 - ✓ IT enabled services

One Computer Class Room for IT services to Students in Which eight Computer and Two printers are available.

- ✓ Financial assistance (scholarships/ schemes for SC/ST/OBC/ minority, Group & Health Insurance Schemes)

Yes

- ✓ Personal enhancement & development schemes-, NSS, Facilities for physically challenged & slow learners; Tutor-Guardian Scheme, Grievance Redressal Cell, Entrepreneurship Cell, Remedial classes, Career Guidance Cell.

Yes

- ✓ Extracurricular activities: Calendar of activities (Sports, Youth Festival, cultural and literary events), Achievements, Awards

Yes

- ✓ Major student welfare initiatives over the past year

Yes

- Extension Activities

Extension of Class Room ,
 Extension Smart Class Rooms
 Extension of laboratories
 Development of play Grounds
 Extension of Botanical Garden Fencing of Botanical Garden
 Water supply With tub bell in Botanical Garden
 Electrification in Grils hostel
 Procurement of PG Book and Equipments and computers

8. Student Achievements (5 pages)

Highlights the most significant academic and non-academic achievements of students over the past year. This can include major academic awards and scholarships received student research, and sports and other extracurricular activities. Focusses, in particular, on profiling top achievers and describing how resources provided by the college helped these students succeed.

- Research scholarship/ award

S.no	Name of the scholarship award/	Name of the recipient	Class	Area of research
NA				

CULTURAL

- Participation

S.no	Name of the event	District Level	State Level	University	National Level
1	Dancing Singel	√			
2	Geet	√			
3	Samuhik Geet	√		√	
4	Rangoli	√	√	√	
5	Poster nirman	√	√	√	
6	Bhasan pratiyogita	√		√	
7	Nibandh pratiyogita	√	√	√	

- Awards and Achievements**

Name of the student	Class	Event	Award/Achievement
Shaili mishra	BSc IV sem	Poster nirman	Gold medal
Shreya dube	BSc IV sem	Dancing	Silver medal
Ankita mishra	BSc math IV sem	Bhashan	Silver medal
Shreya dube	BSc IV sem	Rangoli	Gold medal
Mohni charmkar	BSc IV sem	Bhashan	Silver medal
Anjali pandey	BSc. VI sem	Samuhik Geet	Silver medal
Rajeshwari gupta	BSc IV sem	Samuhik Geet	Silver medal

SPORTS

- Participation**

S.no	Name of the event	Division Level	State Level	University/ National Level	International Level
1	Kho-kho female	√	√	√	
2	Cricket	√	√	√	
3	Kabaddi	√	√	√	
4	Sataranj	√	√	√	
5	Kabaddi female	√	√		
6	Kho-kho male	√	√	√	
7	Athletics	√	√	√	

- Awards and Achievements**

Name of the student	Class	Sport	Award/Achievement
Ankita mishra	BSc IV sem	Kho-kho	State champion
Ajay gupta	BSc math	Sataranj	State level
Durgesh pandey	BA IV	Sataranj	State level
Dhiraj jaiswal	BA II	Kho-kho	State level
Prem Shankar mali	BSc IV	Cricket	State level
Shaili mishra	BSc IV	Kho-kho	Division level
Rajeshwari gupta	BSc IV	Kho-kho	Division level
Mohni Charmkar	BSc IV	Kho – kho	Division level
Dhiraj jaiswal	BA II	Athletics	Division level
Ankita mishra	BSc IV	Athletics	Division level

9. Research Activities (4 pages)

Identifies major research themes, places these themes in their social and economic context, highlights major research achievements (publications, collaborations, intellectual property produced, external funding received etc.), and profiles top researchers. Lays out the research agenda and identifies themes for the coming year.

- Major research themes

S. No.	Department	Prioritized research area and expertise	Social/ economic context
		<i>No</i>	

- Major/Minor research projects

S. No	Name of the Faculty	Year	Title of the project	Name of funding Agency/ Industry	Total grant received
No					

- Papers presented in regional, national and international seminars/ conferences

S. No.	Name of the faculty	Regional/ State	National	International
1	English	Regional		
2	History	Regional,	National	International
3	Physics		National	
4	Chemistry		National	International
5	Zoology		National	
6	Political science		National	International
7	Botany	Regional,	National	

• Publications in national/ international journals

S.No.	Name of the faculty	Name of the journal	Title of the paper	ISSN/ ISBN number /Impact factor
1	English	<p>1- The Indian Journal of basic and applied Research. Vol 2 issue I , Jan 2017. E-ISSN No: 2454-4639</p> <p>2- The Indian Journal of basic and applied Research. Vol 2 issue I , April 2017.</p> <p>3- A Journal of Asia for Democracy and Development . Vol-XVI (4) 2016</p>	<p>1- Nissan Ezekiel : a single force in Contemporary poetry in English</p> <p>2- Social Reality and the Cosmopolitan Culture in A Time to Change , Sixty Poems and The Third of Nissim Ezekiel a Study.</p> <p>3- Contradictions in state system and Indian society and Efforts for Quality life .</p>	<p>1. E-ISSN No: 2454-4639</p> <p>2. E-ISSN No: 2454-4639</p> <p>3. RNI No MP Bill /2001/7690 ISSN 0973 – 3833, Council for peace , Development and Cultural unity , Modi Niwas jain Mandir Road , Morena – 476001 INDIA</p>
2	Chemistry	International journal of latest research in science and technology.	Studies on physico chemical parameters on Ban Sagar Dam	Volume II to issue 3 page no. 20-22 May June 2013. ISSN 2278-5299.
3	Physics	<p>1-National seminar on solar activity and cosmic ray modulation at Govt P.G. College Satna (M.P.)</p> <p>2--National seminar on solar activity and cosmic ray modulation at Govt P.G. College Satna (M.P.)</p> <p>3- National seminar on cosmic ray modulation in inner heliosphere at Govt.Model SC. College Rewa (M.P.)</p> <p>4-- National seminar on cosmic ray modulation in inner heliosphere at Govt.Model SC. College Rewa (M.P.)</p> <p>5- National seminar on Solar plasma process and cosmic ray modulation at Govt.New Sc. College Rewa (M.P.)</p>	<p>A Study of relationship among various solar parameters during solar cycle 23.</p> <p>A Study of relationship among various solar parameters.</p> <p>Correlative study of sunspot no. and interplanetary magnetic field.</p> <p>Association of solar wind velocity and geomagnetic disturbance index during 2006-2011.</p> <p>Association and correlation between cosmic ray intensity and geomagnetic activity .</p>	<p>09-10 October 2010,Page No.116</p> <p>09-10 October 2010, Page No.143</p> <p>09-10 February 2013.Page no.72</p> <p>09-10 February 2013 Page no.71</p> <p>08-09February 2014 Page no.53</p>

		6- ultra scientist of physical science 7- Indian journal of applied Research	Study of time lag in long term cosmic ray intensity variation with sunspot number . Variation of Geomagnetic Disturbance (Ap) and Plasma Electric field (Vb) with sunspot number (Rz) during stream time for solar cycle 22&23.	Vol.24(3) B, 452-456, 2012 ISSN – 2249-555 X Vol – I Issue 12 sep 2012 P- 84
4	History	01-“kks/k lk/kuk e0 iz0 Hkkx II 2016 02-bZ0 vad 28 tqykbZ ls fnIEcj2016 03-]Central India journal of historical and Archaeological Research.Radha Publication New Delhi.	Mh ys;V }kjk of.kZr xqtjkr ds rhu C;kikj dsUnz] e;/dkyhu lkfgR; lk>k laLd`fr “kks/k i= 2017	(ISSN: 2231-3877) Page no. 346-348 (ISSN: 2277-4157) Page no.156-161
5	Political Science	1- An International Referred Journal Impact Factor – 01-9411-2015 2- An International Referred Journal Impact Factor – 01-9411-2015 3- International seminar B.H.U.Banaras UP	ernku O;ogkj dk IS}kafrd fo”ys’k.k uohu “kks/k lalkj vizSy ls twu 2016 Hkkjrh; lekt esa efgykvksa dh jktuhfrd psruk ,oa laEc}rk dk fo”ys’k.k ¼ernku O;ogkj ds lanHkZ esa vizSy ls twu 2016½ jkT; dh jktuhfr esa efgyk ernkrk	(ISSN 2320-8767) E-ISSN-2394-3793 Page no.51 (ISSN 2320-8767) E-ISSN-2394-3793 Page no.48 02-03 june 2016
6	Zoology	1- Trends in Biosciences 10(1), 2- The Indian Journal of Basic and Applied Research Volume 2 Issue 1 Jan 2017	1- Seasonal Phytoplankton Density of Gurma Bundh, Hanumana, Rewa.M.P 2- Assessment of seasonal variations of water quality parameters of Gurma Bundh, Hanumana, Rewa (M.P.)India	ISSN 0974-8431, 438-440- 2017 Online &print @www.ijbar.co.in
7	Botany	1-National Conference on Recent concept’s of biodiversity and biotechnology organized by Shri Rama Krishna college of commerce & science Satna (M.P.) 2-National Conference on Recent concept’s of biodiversity and biotechnology organized by Shri Rama	Survey of national park’s and sanctuaries and there biodiversity status in (M.P.) Evolution of organic method of cultivation of withania somnifera Lidunal under nursery and field condition’s Conservation of natural	24 -25 January 2009 , Page no.98 24 -25 January 2009 , Page no.113

		Krishna college of commerce & science Satna (M.P.) 3- Organized by Govt.Chhatrasal P.G. College Panna (M.P.)	resources with special reference to water conservation.	20 -21 February 2009 ,
8	Political science Dr. Lavkush Deependra	izdk'kd %& uo dkSfVY; 'kks/k laLFkku jhok ,oa vFkZ'kkL= v/;;u rFkk vuqla/kku dsUnz 'kkldh; Bkdqj j.ker flag egkfo- jhok ¼e-iz-½ 1- jk"V ^{ah} ; lsehukj 20 ,oa 21 fnIEcj 2- us'kuy lsehukj 26 ,oa 27 ekpZ 2011 3- jk'V ^{ah} ; 'kks/k laxks"Bh 22 ,oa 23 Qjoh 2008	1 oeZeku ifjis{; esa uDlyokn dh leL;k i` 277&- 281 2 lwpuk dk vf/kdkj vf/kfu;e 2005 dh izHkko'khyrk dk Lrj ¼jhok ftys fo's'k IUnHkZ esa ½ i` 282&286 1- iapk;rh jkT; O;oLFkk esa xzkeh.kks dk fodkl 'kkldh; LukrdsRrj egkfo ky; fuokMh+ ftyk Vhdex<+ 2- tsUMj vlekurk ,sfrgkfld ifjis{; 'kkldh; Bkdqj j.ker flag egkfo0 jhok 3- Hkkjrh; lekt esa efgykvksa dh izfLFkfr ,oa leL;k,as o lek/kku 'kkldh; Bkdqj j.ker flag egkfo0 jhok	ISSN – 0975-9220 March 2016 -2
9	Librarian	us'kuy lsehukj fnIEcj 19 ,oa 20 fnIEcj 2007 us'kuy lsehukj 21 ,oa 22 Qjoh 2009	Internet services for library and information center Status of information management in IT Driven Environment	fnIEcj 19 ,oa 20 fnIEcj 2007 21 ,oa 22 Qjoh 2009

- List of linkages/ Collaborations/ MOUs

No

- College Publications: Research Journal, Magazine, Newsletter

No

10. Human Resources (2 pages)

Highlights senior faculty and administrative appointments. Describes what new areas of activity (new courses, research areas, extracurricular activities etc.) and administrative improvements are enabled by these appointments.

1. Faculty and Administrative appointments: Teaching and Non-teaching

Positions	Teaching Faculty				Non Teaching Faculty	Technical Staff
	Prof	Promoted Prof	Assistant Prof	Guest Faculty		
Sanctioned by UGC/ University/ State Govt						
<i>Filled</i>	0	0	0	15	0	0
Sanctioned by Management/ Janbhagidari Samiti/ Other authority	0	0	0	0	06	02
<i>Filled</i>						

2. Guest Faculty: subject-wise appointments

S.no.	Name of the Guest Faculty	Qualification	Subject
1	Dr. Yaduveer Prasad mishra	M.A Phd.	English
2	Anjani kumar suryavanshi	M.A NET	Economic
3	Dr. Jyoti Dwivedi	M.A Phd	Hindi
4	Dr. Alima shahnaz siddiqui	M.A Phd	History
5	Smt. Roopa sharma	M.lib , M.phil	Librarian
6	Dr. Kamlesh kumar jaiswal	MSc. M.phil. Phd	Physics
7	Dr. Ritu sen	M.A Phd	Political
8	Dr. Lavkush Deependra	M.A Phd ,NET	Political

9	Jamuna namdeo	M.A, SLET	Sociology
10	Manish nirat	MSc. , Phd	Zoology
11	Satendra singh	MSc. M.phil	Zoology
12	Dr. Gajendra singh	MSc. Phd	Botany
13	Dr. Safikun nisha	MSc. Phd	Botany
14	Dr. Sanjay kumar gupta	MSc. Phd	Chemistry
15	Dr. Diwakar sharma	MSc. .phd	Chemistry
16	Zaseem Ahmad	MSc. M.phil	Math

3. Annual improvement in academic, research & administrative Initiatives

Increase in passing parentage of students Increase in number of Working days minor Project got completed and submitted.

11.Events and Initiatives (5 pages)

Describes major events including seminars, conferences, competitions, student study trips etc. Focuses on what was achieved and learned, and how the college will follow up.

Describes significant academic, administrative, student support, fundraising, and other initiatives over the past year. The description of each initiative will be structured around the need for the initiative, how it was designed, what resources were used, what results were achieved, and which features of the initiative drove success.

Study tour to baiga , bhariya , village for sociology student

12.Institutional Development plan (4 pages)

Describes the college's activities over the past year under different schemes, discusses performance against strategic/institutional development plans and commitments over the previous year.

Indicator*	Baseline Value	Target for [current year]	Value as on 30 th September [current year]
		Null	

Role of Internal Quality Assurance Cell (IQAC) in academic audit and initiating quality assurance strategies and processes

--

15.Placement Report (5 pages)

Describes the college’s placement cell activities, placement rate and salary statistics, and lists major employers and sectors of employment (disaggregated by gender and course studied). Profiles successful alumni and identifies emerging placement trends.

Activities of Placement Cell

S.no.	Name of the activity	Name of the Resource Person/ agency	Date & Duration
		Nill	

Placement Details

S.no.	No. of Students Selected	List of employers/companies	Salary Package
		Nill	

Alumni Profile

S.no.	Name of Alumni	Employment status	Name of the organisation
1	C.P Dwivedi	Retd. Senior superintended of post office	post office
2	Dr. N.P. Dwivedi	M.B.B.S	Jaisinghnagar
3	Dr. Guru prasann singh bhatiya	Coal mines	Gujrat
4	Dr. Om prakash tiwari	GM. Coal mines	Thikari M.P.
5	Dr. RK Dwivedi	Principal	D.P.S. Sagar
6	Shri. P.N Tiwari	Nayab Tahseeldar	Anuppur

7	Shri. Deepak Tiwari	Nayab Tahseeldar	Umariya
8	Shri. R.K Gautam	Advocate	Jaisinghnagar

14. Innovations and Best Practices

15. SWOC Analysis (strength , weaknesses, Opportunity and Challenges

This college imparts education to students with a view to empower them through the light of knowledge and has been serving generation with its unique and innovative ways of teaching learning and reaching out to the society. It illuminates the heart and mind of the students and gives leadership in standing for a good cause. The young students educated in this campus go out with a purpose to contribute to the society by doing justice to their profession, building ideal families and rearing a new generation with values.

- One of the main reasons of its popular acceptance and recognition is that it is a only college situated in this tribal belt.
- Inspiring quotes are displayed on the walls of the building to motivate the students and faculty both.
- Numerous facilities, scholarships and financial aids are available to meritorious and deserving students.
- Unlimited extension opportunities to students with an ardent sense of responsibility, Rural Camp, Eco-friendly, Awareness rallies, skill oriented programmes.
- Institution has qualified and competent staff and faculty which continuously works to achieve success.
- Strong mentoring and student support system takes care of all students.
- Focus on personality development of each student through development of positive attitude, leadership qualities and self awareness.
- College has Clean, Green and pollution free campus.
- Continuous evaluation of students by CCE, helping them to assess themselves.
- College has well equipped laboratories in the science subjects and well equipped Computer lab also.
- College has Common Room for girls.
- College has Shikshak Abhibhavak Yojana to interact with parents.
- College has elaborate system of Feed Back received from the students on curriculum and teaching.
- College organizes different Campaigns for awareness, both in rural and urban areas through NSS. College provides a variety of Scholarships for financially weak.

WEAKNESS

- Lack of permanent staff.
- Research facilities are not up-to the mark.
- College needs more infrastructural facility like Building, Classrooms, Laboratories etc. as all the Gross Enrolment Ratio is far increasing.
- Poor execution of student centric activities due to very low financial status of the students.

OPPORTUNITY

- Increasing awareness towards student .
- Career guidance to all students.
- Personality development and mentoring.
- Providing Expertise to the society by development Consultancy services.
- The students are made efficient through various self employment skill.

CHALLENGES

- High Teacher student ratio.
- Students belong to the orthodox families, (Early marriage and other conservative views of the families) create difficulty in imparting scientific knowledge which is another challenge that faculty faces.
- Commuting time between their home and college is more since they come from far places and transport facilities is not there.
- For good placement grooming the students and upgrading the communication skill.
- Limitation and constraint in government financial support.
- Posting regular faculties against vacant posts.

FUTURE PLAN

- College has sent a proposal for providing Bus facility for the students.
- Proposals for new vocational and Job oriented courses.
- Expansion of laboratories.
- Construction of new buildings to meet out requirements.
- Amenities for partially blind students.
- Special toilets for physically disabled students.
- More innovations in teaching, learning process.
- More transparency in all operating mechanism.
- Short term Training programs related to Job opportunities & awareness regarding Human Right/ Women Empowerment/ Environment etc.
- To Develop infrastructure.
- Proposal for installation of Solar Panel in the college & hostel.

16.Looking Ahead (3 pages) Future Plans

Lays out the college's priorities and goals over the coming year. Describes key initiatives planned, what each initiative is expected to achieve, and how it will contribute to the college's long term development.

Key Initiatives Planned/ implemented

S. No	Head (administrative/ academic, etc)	Nature of proposal	Expected Outcome
		<ol style="list-style-type: none">1. Development of Institute as Quality Education Centre<ol style="list-style-type: none">a. Establishment of e- library.b. Up gradation of existing labs.c. Extension of classrooms, procurement books and Equipments .2. Improving the employability of students<ol style="list-style-type: none">a. Providing skill oriented education / trainingEnhancing sports3. Establishment of eco-friendly environment	

17. Appendix: Institutional Performance Data and Financial Reports

Provides key data on the institution and its performance, including achievement against strategic plan targets and financial reports. This section is mandatory. All data fields must be completed, in the format and as per the instructions attached.

Part II

Appendix: Institutional Performance Data and Financial Reports (all part II data kindly fill in attached excel sheet)

1. Sanctioned seats and enrolment

(a) Sanctioned Seats					
	SC	ST	Other Reserved Categories	General	Total
Undergraduate	125	378	232	219	954
Postgraduate	-	-	-	-	-
PhD					

Data Source: AISHE

(b) Enrolment							
		Undergraduate			Postgraduate		PhD
		Year 1	Year 2	Year 3	Year 1	Year 2	
SC	Male	37	13	15	-	-	-
	Female	32	23	05	-	-	-
ST	Male	77	53	27	-	-	-
	Female	110	87	24	-	-	-
Other Reserved Categories	Male	63	36	32	-	-	-
	Female	47	29	25	-	-	-
General	Male	34	18	26	-	-	-
	Female	61	46	34	-	-	-
Total	Male	211	120	100	-	-	-
	Female	250	185	88	-	-	-

Data Source: AISHE

Number of sanctioned seats by discipline group and enrolment in the 1 st year as on September 30 th [current year]				
Discipline Group	Undergraduate		Postgraduate	
	Sanctioned Seats	Enrolment	Sanctioned Seats	Enrolment
Arts	740	700		
Commerce				
Criminology and Forensic Science				
Cultural Studies				
Defence Studies				

Design				
Disability Studies				
Education				
Fashion Technology				
Fine Arts				
Fisheries Science				
Foreign Languages				
Gandhian Studies				
Home Science				
Indian Languages				
IT & Computer				
Journalism and Mass Communication				
Law				
Library and Information Science				
Linguistics				
Management				
Marine Science and Oceanography				
Oriental Learning				
Physical Education				
Religious Studies				
Science	510	428	-	-
Social Science				
Social Work				
Women Studies				

Data Source: AISHE

2. Transition and on-time graduation

(a) Transition from the 1st year to the 2nd year (Undergraduate)				
		Number of students admitted to the 1 st year in [the previous academic year] (*)	Of (*), the number of students currently enrolled in the 2 nd year who:	
			Passed all subjects in the 1 st year	Were Allowed to Keep Terms
SC	Male	37	33	04
	Female	32	27	05
ST	Male	77	59	18
	Female	110	102	08
Other Reserved Categories	Male	63	45	18
	Female	47	40	07
General	Male	34	23	11
	Female	61	51	10
Total	Male	211	160	51
	Female	250	220	30

Data Source: AISHE, examination results declared by [affiliating university/autonomous college]

(a) Transition from the 1st year to the 2nd year (Postgraduate)				
		Number of students admitted to the 1 st year in [the previous academic year] (*)	Of (*), the number of students currently enrolled in the 2 nd year who:	
			Passed all subjects in the 1 st year	Were Allowed to Keep Terms
SC	Male	-	-	-
	Female	-	-	-
ST	Male	-	-	-
	Female	-	-	-
Other Reserved Categories	Male	-	-	-
	Female	-	-	-
General	Male	-	-	-
	Female	-	-	-
Total	Male	-	-	-
	Female			

Data Source: AISHE, examination results declared by [affiliating university/autonomous college]

(b) On-time graduation (Undergraduate)			
		Number of students admitted to the 1 st year in [year t-3] (*)	Of (*), the number of students who passed all final year examinations for the previous academic year
SC	Male	13	13
	Female	23	21
ST	Male	53	49
	Female	87	86
Other Reserved Categories	Male	36	32
	Female	31	30
General	Male	18	17
	Female	46	42
Total	Male	120	111
	Female	187	179

Data Source: AISHE, examination results declared by [affiliating university/autonomous college]

(b) On-time graduation (Postgraduate)		
	Number of students admitted to the 1 st year in [year t-2] (*)	Of (*), the number of students who passed all final year examinations in the current year

SC	Male	-	-
	Female	-	-
ST	Male	-	-
	Female	-	-
Other Reserved Categories	Male	-	-
	Female	-	-
General	Male	-	-
	Female	-	-
Total	Male	-	-
	Female	-	-

Data Source: AISHE, examination results declared by [affiliating university/autonomous college]

3. Faculty and administrative staff in position and training

(a) Faculty and administrative staff in position as on 30 th September, [current year]							
		Reserved					Unreserved
		SC	ST	MP Residents	Females	Others	
Assistant Professor	Sanctioned						
	Filled (Regular)						
	Filled (Contract)						
	Guest Lecturers	03	Nil	All	05	07	06
Associate Professor	Sanctioned						
	Filled (Regular)						
	Filled (Contract)						
	Guest Lecturers						
Professor	Sanctioned						
	Filled (Regular)						
	Filled (Contract)						
	Guest Lecturers						
Admin. Staff (all)	Sanctioned						
	Filled (Regular)						
	Filled (Contract)						
Accountant	Sanctioned			01		01	
	Filled (Regular)			01		01	
	Filled						

SC	Male	124	14545				
	Female	67	19545				
ST	Male	167	14545				
	Female	136	19545				
General	Male	110	5225				
	Female	122	10225				
Total	Male	401	4807345				
	Female	325	5215085				

Data Source: AISHE (scholarship, Gaon ki Beti Yojana, vikramaditya, aawas yojana, science dev.yojna, Awagaman yojna.)

(a) Financial support received, from the DHE, by students in the college between October 1 st [previous year] to September 30 th [current year]							
		Undergraduate		Postgraduate		PhD	
		Number	Average Value (Rs.)	Number	Average Value (Rs.)	Number	Average Value (Rs.)
SC	Male						
	Female	5	6000				
ST	Male						
	Female	39	6000				
General	Male						
	Female	194	6000				
Total	Male						
	Female	238	1428000.00				

Data Source: College records, DHE (Gaon ki Beti Yojana, Awagaman yojna.)

(b) Hostel occupancy as on 30 th September, [Current Year] (all hostels)		
Capacity		Number of residents
Males:	Females:	
SC	Male	
	Female	
ST	Male	
	Female	

General	Male	
	Female	
Total	Male	
	Female	

Data Source: Hostel register verified against fee receipts on record

(c) Hostel occupancy as on 30 th September, [Current Year] (girls only hostels opened after _____)	
Capacity	Number of residents
SC	—
ST	—
General	—
Total	—

Data Source: Hostel register verified against fee receipts on record

5. Examination Results

(a) Examination results for [previous academic year] (undergraduate)											
		SC		ST		Other Reserved Categories		General		Total	
		M	F	M	F	M	F	M	F	M	F
1 st year	Appeared	37	32	77	110	63	47	34	61	211	250
	1 st division	23	21	45	76	40	32	24	45	132	174
	2 nd Division	10	08	25	25	15	11	07	12	56	55
	3 rd Division	04	03	08	10	08	04	03	04	23	21
2 nd year	Appeared	13	23	53	87	36	31	18	46	120	187
	1 st division	09	18	32	66	24	23	12	32	77	139
	2 nd Division	03	04	18	18	08	06	04	10	33	38
	3 rd Division	01	01	03	03	04	02	02	04	10	10
3 rd year	Appeared	15	05	27	24	32	25	26	34	100	88
	1 st division	08	03	18	17	20	19	20	25	66	64
	2 nd Division	05	01	06	05	08	04	03	06	22	16
	3 rd Division	02	01	03	02	04	02	03	03	12	08

Data Source: AISHE, Examination results declared by [affiliating university/autonomous college]

(a) Examination results for [previous academic year] (postgraduate)											
		SC		ST		Other Reserved Categories		General		Total	
		M	F	M	F	M	F	M	F	M	F

1 st year	Appeared	-	-	-	-	-	-	-	-	-	-
	1 st division	-	-	-	-	-	-	-	-	-	-
	2 nd Division	-	-	-	-	-	-	-	-	-	-
	3 rd Division	-	-	-	-	-	-	-	-	-	-
2 nd year	Appeared	-	-	-	-	-	-	-	-	-	-
	1 st division	-	-	-	-	-	-	-	-	-	-
	2 nd Division	-	-	-	-	-	-	-	-	-	-
	3 rd Division	-	-	-	-	-	-	-	-	-	-

Data Source: AISHE, Examination results declared by [affiliating university/autonomous college]

6. Placement and student tracking

(a) Placement and Tracking of Students who graduated in [previous academic year] (Undergraduate)						
		Number of students who graduated in [the previous academic year] (*)	Of (*), the number of students who were successfully tracked and are:			
			Employed/ Self-employed	In education/ training	Unemployed	Not in the labour force
SC	Male	nil	nil	nil	nil	nil
	Female					
ST	Male					
	Female					
General	Male					
	Female					
Total	Male					
	Female					

Data Source: Records of the college placement cell

(b) Placement and Tracking of Students who graduated in [previous academic year] (Postgraduate)						
		Number of students who graduated in [the previous	Of (*), the number of students who were successfully tracked and are:			
			Employed/ Self-employed	In education/ training	Unemployed	Not in the labour

		academic year] (*)	d	training		force
SC	Male	nil	nil	nil	nil	nil
	Female					
ST	Male					
	Female					
General	Male					
	Female					
Total	Male					
	Female					

Data Source: Records of the college placement cell

7. PhDs Awarded

Number of PhDs awarded between October 1 st [previous year] to September 30 th [current year]	
Discipline Group	Number
Arts	nil
Commerce	
Criminology and Forensic Science	
Cultural Studies	
Defence Studies	
Design	
Disability Studies	
Education	
Fashion Technology	
Fine Arts	
Fisheries Science	
Foreign Languages	
Gandhian Studies	
Home Science	
Indian Languages	
IT & Computer	
Journalism and Mass Communication	
Law	
Library and Information Science	
Linguistics	
Management	
Marine Science and Oceanography	
Oriental Learning	
Physical Education	
Religious Studies	
Science	nil
Social Science	
Social Work	

Women Studies	
Literature	
Other	
All disciplines	

Data Source: AISHE

8. Research and consultancy

Revenue generated through externally funded research and consultancies over [previous financial year]		
Discipline Group	Number of active projects	Total Revenue Generated (Rs. lakhs)
Arts	Nil	nil
Commerce		
Criminology and Forensic Science		
Cultural Studies		
Defence Studies		
Design		
Disability Studies		
Education		
Fashion Technology		
Fine Arts		
Fisheries Science		
Foreign Languages		
Gandhian Studies		
Home Science		
Indian Languages		
IT & Computer		
Journalism and Mass Communication		
Law		
Library and Information Science		
Linguistics		
Management		
Marine Science and Oceanography		
Oriental Learning		
Others / Inter-disciplinary		
Physical Education		
Religious Studies		
Science	Nil	nil
Social Science		
Social Work		
Veterinary and Animal Sciences		
Women Studies		
All disciplines		

Data Source: College/university records

Number of papers published in peer-reviewed journals between October 1 st [previous year] to September 30 th [current year]			
Discipline Group	Number of papers published		Number of published papers through cross-institute research collaboration
	International Journals	National Journals	
Arts	Nil	Nil	nil
Commerce			
Criminology and Forensic Science			
Cultural Studies			
Defence Studies			
Design			
Disability Studies			
Education			
Fashion Technology			
Fine Arts			
Fisheries Science			
Foreign Languages			
Gandhian Studies			
Home Science			
Indian Languages			
IT & Computer			
Journalism and Mass Communication			
Law			
Library and Information Science			
Linguistics			
Management			
Marine Science and Oceanography			
Oriental Learning			
Others / Inter-disciplinary			
Physical Education			
Religious Studies			
Science	Nil	Nil	Nil
Social Science			
Social Work			
Women Studies			
All disciplines			

Date Source: College records based on published papers submitted by faculty

9. NAAC accreditation and UGC autonomy

	Date of Application (LOI & SSR submitted)	Date on which accreditation was received	Grade	Valid till
1 st Cycle	13-05-2014	-	-	-

2 nd Cycle	-	-	-	-
3 rd Cycle	-	-	-	-

Date of submission of the Annual Quality Assurance Report for the current year: _____.

Does the college have currently valid UGC autonomy? _____ No _____ . If yes, by order number _____ No _____, dated _____

10. Institutional Trends

Variable	Baseline Value	[Year 1]	[Year 2]	[Year 3]	[Year 4]	Current Year
Percentage of sanctioned seats in the 1 st year filled (undergraduate, all categories)	300	89%	93%	97%	100% + 10% extra	100% + 10% ex
Percentage of sanctioned seats in the 1 st year filled (postgraduate, all categories)	nil	nil	nil	nil	nil	nil
Transition rate from the 1 st year to the 2 nd year (undergraduate, all categories)	290	75%	81%	83%	84%	87%
On-time graduation rate (undergraduate, all categories)	290	75%	81%	83%	84%	87%
Transition rate from the 1 st year to the 2 nd year (post graduate, all categories)						
On-time graduation rate (postgraduate, all categories)						
Regular faculty in position rate (all levels, reserved categories)						
Regular faculty in position rate (all levels, unreserved categories)						
Percentage of regular faculty with PhDs (all levels)		80%	65%	75%	75%	75%
Employment rate of graduates from the previous academic year (undergraduate, all categories)						
Employment rate of graduates from the previous academic year (postgraduate, all categories)						
Percentage of total revenue generated through externally funded research						

Number of papers published in peer-reviewed, international journals						
---	--	--	--	--	--	--

Source: Tables under section 1-8.

11. Financial Reports

Name and registration number of the auditor - **Dr. Daljeet Singh**

Number of audit observations recorded by the auditor- **No - 014943C (Shahdol)**

Number of audit responses found satisfactory, as certified by the project directorate_____.

Certified audit reports as per the standard Chart of Accounts to be attached.

12. All India Survey of Higher Education

Date on which all applicable fields of the Data Collection Format for the All India Survey of Higher Education were completed and submitted - **30 sept 2016**

Instructions

- All data is to be reported as on 30th September of the current year.
- Postgraduate courses refer to courses at the Masters and MPhil level.
- The number of sanctioned seats is the number of students the college is authorized, by the UGC/DHE/affiliating University, to admit in the first year of its degree programs.
- The number of sanctioned faculty posts is the number of faculty the college is authorized, by the UGC/DHE/affiliating University, to recruit on a full-time basis.
- Enrolment is defined as the number of students who have paid their admission fees for joining a degree program by September 30 of the respective academic year.
- Admission is defined as the number of students who have paid their admission fees for joining a degree program, in the first year, by September 30 of the respective academic year and who have never been enrolled in that degree program previously.
- Other Reserved Categories include all categories of students (for e.g. sports quota, extracurricular quota, residents of Jammu and Kashmir etc.) for whom a fixed percentage of sanctioned seats are reserved.
- Examination results are to be reported for examinations held in the previous academic year, and the results for which were declared by 30th September of the current year.
- Allowed to keep terms refers to students who did not pass all subjects in the previous year but were allowed to transition to the next year of their respective degree programs.
- Regular faculty refers to faculty employed on open-ended, full-time contracts as per UGC norms.

- Contract faculty refers to faculty employed on fixed term, full-time contracts as per UGC norms.
- Guest Lecturers refers to faculty employed on a per lecture or per day basis as per UGC norms.
- Data on scholarships is to be reported on all scholarships awarded between 1st October of the previous year and 30th September of the current year.
- A hostel seat is considered occupied if a student has been allotted a seat in the hostel and the student, to whom the seat was allotted, has paid the hostel fee for the current academic year.
- Examination results refers to the average score obtained by a student, in the respective academic year, across all exams that are used to assess whether the student has met the requirement of the degree program in which he/she is enrolled.
- Student tracking refers to having up to date contact information (mobile phone and/or email address) and status (employment, unemployed, in formal education or training, not in the labour market/other) for each student for up to six from the end of the academic year when the student passed out (graduated).
- Externally funded research and consultancies refer to research and/or development funded through consultancy contracts or partnerships with a sponsor or purchaser who is external to the institution.
- A peer-reviewed journal is one that subjects an author's research to review and evaluation by others who are experts in the same field, before the research is published.
- An international journal is one that has an International Standard Serial Number (ISSN) issued by the ISSN International Centre.
- A paper is said to be published through cross-institute research collaboration if the primary affiliation of at least two authors is to different colleges/institutions.
- The institutional performance indicators common across all institutions can be found in the PIP. Institution-specific performance indicators can be found in the MOU signed between the Institution and the Department of Higher Education.
- The standard Chart of Accounts refers to the standard format for audit reports as notified by the Department of Higher Education through its orders.